

ASHEVILLE SYMPHONY *Youth* ORCHESTRA

Bassoon – Youth Philharmonic Audition Requirements 24_25

- Scales - quarter notes, 80-100BPM – 2 scales will be chosen from 11/12 Honors Band Scales <https://www.ncbandmasters.org/rotation2-11-12-solos-and-scales>
- **One prepared solo piece** of your choice (no longer than 3 minutes), not an ensemble/band piece
 - Example: 11/12 Honors Band Solo; *Rising 11th grader may choose to play the 9/10 Honor Band Solo* <https://www.ncbandmasters.org/audition-requirements>
- Students will be asked to **sight read** a piece of music
- **Perform both Excerpts Below:**

Sibelius Symphony no. 2 mvt. 2

--

Tempo andante, ma rubato

1 (♩-♩) 23 *riten.* *a tempo* A *Vc.* 3 *mf lugubre*

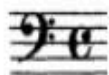
3 (Vc.) 12

42 *dim. pp* *mf* *dim. pp* *poco f*

49 *dim. pp* *mf* *dim. pp* 1 *mf*

Bach Orchestral Suite No.1, Movement 1, Overture mm. 20-32

One bassoon, mm. $\text{♩}=92$



Excerpt 1

